

NUDURA 12" (305mm)  
STANDARD FORM UNIT

TREMCO EXOAIR 230 OR  
FUNCTIONAL EQUIVALENT

EXTERIOR FINISH  
AS SPECIFIED

HORIZ/VERT REINFORCEMENT  
AS PER CODE OR AS SPECIFIED  
(SEE NOTE 1)

TREMCO/NUDURA APPROVED  
PARGE COAT

MIN.  $\frac{1}{2}$ " (13mm) GYPSUM BOARD

WET SET DOWELS TO MATCH  
VERTICAL REINFORCEMENT  
BETWEEN POURS OR AS  
SPECIFIED

GRANULAR FILL

CONCRETE SLAB

NOTES:

1) FOR OPTIMAL REINFORCEMENT PLACEMENT IN THE NUDURA FORM, SPACING OF HORIZONTAL REINFORCEMENT TO BE SPECIFIED AT 18" (457mm) O.C. AND VERTICAL REINFORCEMENT TO BE SPECIFIED AT MULTIPLES OF 8" (203mm) O.C. REFER TO NUDURA REINFORCEMENT PLACEMENT DETAILS.

*This detail is for general informational purposes only. The project design professional determines, in its sole discretion, whether this detail or a functionally equivalent detail is best suited for the project with respect to any architecture, engineering, and design requirements, including any local building code requirements. If this document is not reviewed and the product is not approved for use by a licensed design professional, the customer agrees that the detail may contain substantive flaws requiring correction, and hereby releases Tremco CPG Inc. from any and all liability related to the design and installation of the product. This detail is subject to change without notice. Contact Tremco to ensure you have the most recent version.*

**Non-Combustible Construction - Slab on Grade**

Detail: Nudura 12" (305mm) Form Unit, Stem Wall at Slab on Grade,  
Exterior Finish as Specified, Non-Insulated

Drawn by: TVC

Checked by: KS

Scale: 1:8

Revision #: 04

Revised by: KAB

Date: 3/13/2024

File Name:

B12C01



Nudura Technical Support: 866-468-6299  
International: +1 705-726-9499

[www.tremcocpg.com](http://www.tremcocpg.com)



Construction Products Group

NUDURA 12" (305mm)  
STANDARD FORM UNIT

TREMCO EXOAIR 230 OR  
FUNCTIONAL EQUIVALENT

EXTERIOR FINISH  
AS SPECIFIED

HORIZ/VERT REINFORCEMENT  
AS PER CODE OR AS SPECIFIED  
(SEE NOTE 1)

TREMCO/NUDURA APPROVED  
PARGE COAT

MIN.  $\frac{1}{2}$ " (13mm) GYPSUM BOARD

WET SET DOWELS TO MATCH  
VERTICAL REINFORCEMENT  
BETWEEN POURS OR AS  
SPECIFIED

GRANULAR FILL

INSULATED CONCRETE  
SLAB

NOTES:

1) FOR OPTIMAL REINFORCEMENT PLACEMENT IN THE NUDURA FORM, SPACING OF HORIZONTAL REINFORCEMENT TO BE SPECIFIED AT 18" (457mm) O.C. AND VERTICAL REINFORCEMENT TO BE SPECIFIED AT MULTIPLES OF 8" (203mm) O.C. REFER TO NUDURA REINFORCEMENT PLACEMENT DETAILS.

This detail is for general informational purposes only. The project design professional determines, in its sole discretion, whether this detail or a functionally equivalent detail is best suited for the project with respect to any architecture, engineering, and design requirements, including any local building code requirements. If this document is not reviewed and the product is not approved for use by a licensed design professional, the customer agrees that the detail may contain substantive flaws requiring correction, and hereby releases Tremco CPG Inc. from any and all liability related to the design and installation of the product. This detail is subject to change without notice. Contact Tremco to ensure you have the most recent version.

**Non-Combustible Construction - Slab on Grade**



Nudura Technical Support: 866-468-6299  
International: +1 705-726-9499

Detail: Nudura 12" (305mm) Form Unit, Stem Wall at Slab on Grade,  
Exterior Finish as Specified, Insulated

Drawn by: TVC

Checked by: KS

Scale: 1:8

Revision #: 04

Revised by: KAB

Date: 3/13/2024

[www.tremcocpg.com](http://www.tremcocpg.com)

File Name:

B12C03



Construction Products Group

NUDURA 12" (305mm)  
STANDARD FORM UNIT

TREMCO EXOAIR 230 OR  
FUNCTIONAL EQUIVALENT

BRICK VENEER c/w  
1" (25mm) AIR SPACE  
AND BRICK TIES

HORIZ/VERT REINFORCEMENT  
AS PER CODE OR AS  
SPECIFIED (SEE NOTE 1)

THROUGH WALL FLASHING  
AS PER CODE OR AS  
SPECIFIED

TREMCO/NUDURA APPROVED  
PARGE COAT WHERE  
EXTENDED ABOVE GRADE

NUDURA 12" (305mm) BRICK  
LEDGE FORM UNIT

MIN.  $\frac{1}{2}$ " (13mm) GYPSUM BOARD

WET SET DOWELS TO MATCH  
VERTICAL REINFORCEMENT  
BETWEEN POURS OR AS  
SPECIFIED

GRANULAR FILL

INSULATED CONCRETE  
SLAB

NOTES:

1) FOR OPTIMAL REINFORCEMENT PLACEMENT IN THE NUDURA FORM,  
SPACING OF HORIZONTAL REINFORCEMENT TO BE SPECIFIED AT 18"  
(457mm) O.C. AND VERTICAL REINFORCEMENT TO BE SPECIFIED AT  
MULTIPLES OF 8" (203mm) O.C. REFER TO NUDURA REINFORCEMENT  
PLACEMENT DETAILS.

*This detail is for general informational purposes only. The project design professional determines, in its sole discretion, whether this detail or a functionally equivalent detail is best suited for the project with respect to any architecture, engineering, and design requirements, including any local building code requirements. If this document is not reviewed and the product is not approved for use by a licensed design professional, the customer agrees that the detail may contain substantive flaws requiring correction, and hereby releases Tremco CPG Inc. from any and all liability related to the design and installation of the product. This detail is subject to change without notice. Contact Tremco to ensure you have the most recent version.*

**Non-Combustible Construction - Slab on Grade**



Nudura Technical Support: 866-468-6299  
International: +1 705-726-9499

Detail: Nudura 12" (305mm) Form Unit, Stem Wall at Slab on Grade,  
Brick Veneer Finish, Insulated

Drawn by: TVC

Checked by: KS

Scale: 1:8

Revision #: 04

Revised by: KAB

Date: 3/13/2024

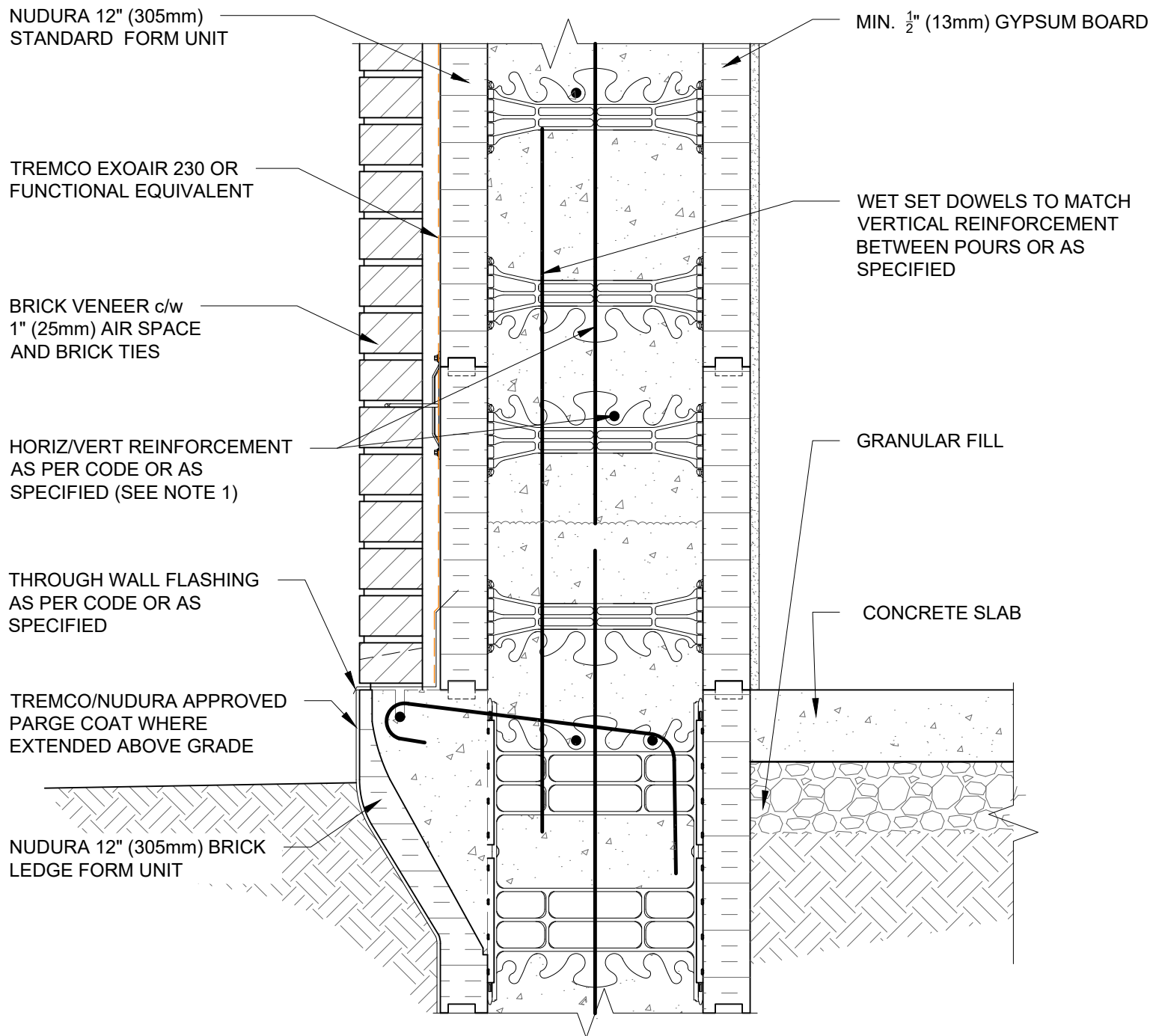
File Name:

B12C06



Construction Products Group

[www.tremcocpg.com](http://www.tremcocpg.com)



#### NOTES:

1) FOR OPTIMAL REINFORCEMENT PLACEMENT IN THE NUDURA FORM, SPACING OF HORIZONTAL REINFORCEMENT TO BE SPECIFIED AT 18" (457mm) O.C. AND VERTICAL REINFORCEMENT TO BE SPECIFIED AT MULTIPLES OF 8" (203mm) O.C. REFER TO NUDURA REINFORCEMENT PLACEMENT DETAILS.

*This detail is for general informational purposes only. The project design professional determines, in its sole discretion, whether this detail or a functionally equivalent detail is best suited for the project with respect to any architecture, engineering, and design requirements, including any local building code requirements. If this document is not reviewed and the product is not approved for use by a licensed design professional, the customer agrees that the detail may contain substantive flaws requiring correction, and hereby releases Tremco CPG Inc. from any and all liability related to the design and installation of the product. This detail is subject to change without notice. Contact Tremco to ensure you have the most recent version.*

#### Non-Combustible Construction - Slab on Grade



Nudura Technical Support: 866-468-6299  
International: +1 705-726-9499

Detail: Nudura 12" (305mm) Form Unit, Stem Wall at Slab on Grade,  
Brick Veneer Finish, Non-Insulated

Drawn by: TVC

Checked by: KS

Scale: 1:8

Revision #: 04

Revised by: KAB

Date: 3/13/2024

[www.tremcocpg.com](http://www.tremcocpg.com)

File Name:

B12C07



Construction Products Group